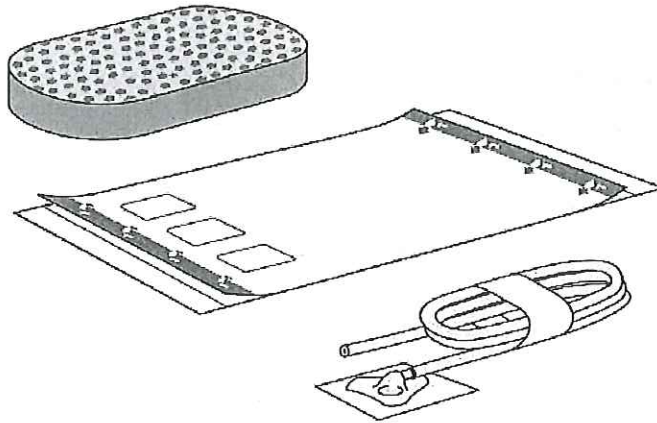




Avance®

NEGATIVE PRESSURE WOUND THERAPY

Avance® Foam Dressing Kit incl. Transparent Film, Transfer Pad
Wound foam, transfer pad and transparent film



STERILE EO

Single use
Usage unique

Patent pending



Do not use if package is damaged



This product nor the packaging
contain Natural Rubber Latex (NRL).



MÖLNLYCKE®
HEALTH CARE

Manufacturer

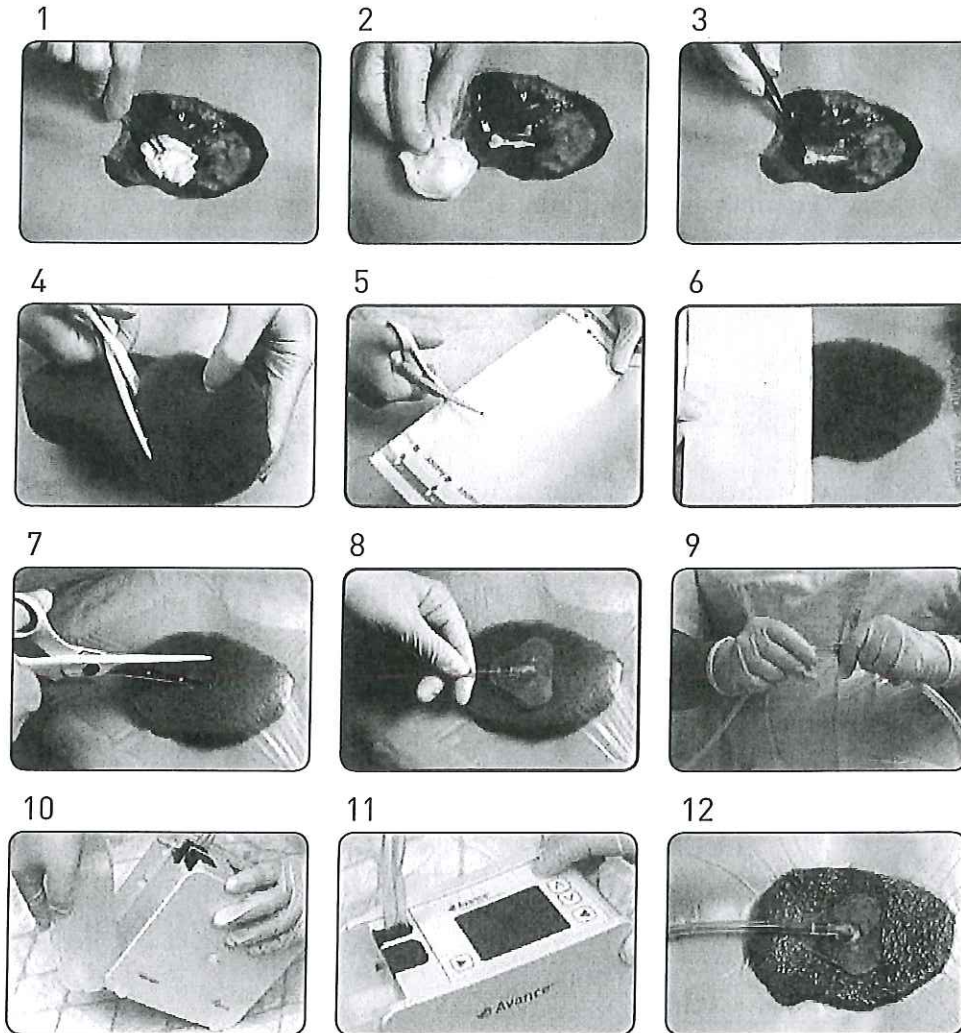
Mölnlycke Health Care AB
Gamlestadsvägen 3C, Box 13080, SE-402 52 Göteborg, Sweden

USA 1-800-882-4582
Canada 1-800-494-5134

Made in Finland

www.molnlycke.com

Avance® Foam Dressing Kit incl. Transparent film, Transfer Pad



1. Cleanse and debride the wound bed as instructed by the clinician.
2. Pat dry.
3. Protect bones/tendons with Mepitel® if applicable. Apply skin protector/skin sealant on periwound skin if required.
4. Cut the foam into an appropriate size corresponding to the dimensions of the wound cavity. Do not cut the foam above the wound site. Remove any fragments from foam edges to protect the wound from loose particles. Sufficiently fill the wound cavity without overpacking.
5. Cut the film to the appropriate size allowing an overlap of 3-5 cm onto surrounding skin.
6. Cover the foam with film. Do not stretch the film. If no airtight seal is obtained, use additional film for sealing, consider use of sealing accessories or remove dressing and start again.
7. Cut a hole in the film < 1cm in diameter.
8. Remove the release film of the Transfer Pad and apply the Transfer Pad directly over the cut in the film. Press gently to fixate the Transfer Pad on top of the film.
9. Connect the Transfer Pad tubing to the canister tubing.
10. Attach the canister to the pump.
11. Turn on the pump.
12. Once the negative pressure is applied, the dressing will have a "raisin-like" appearance and be firm to the touch.